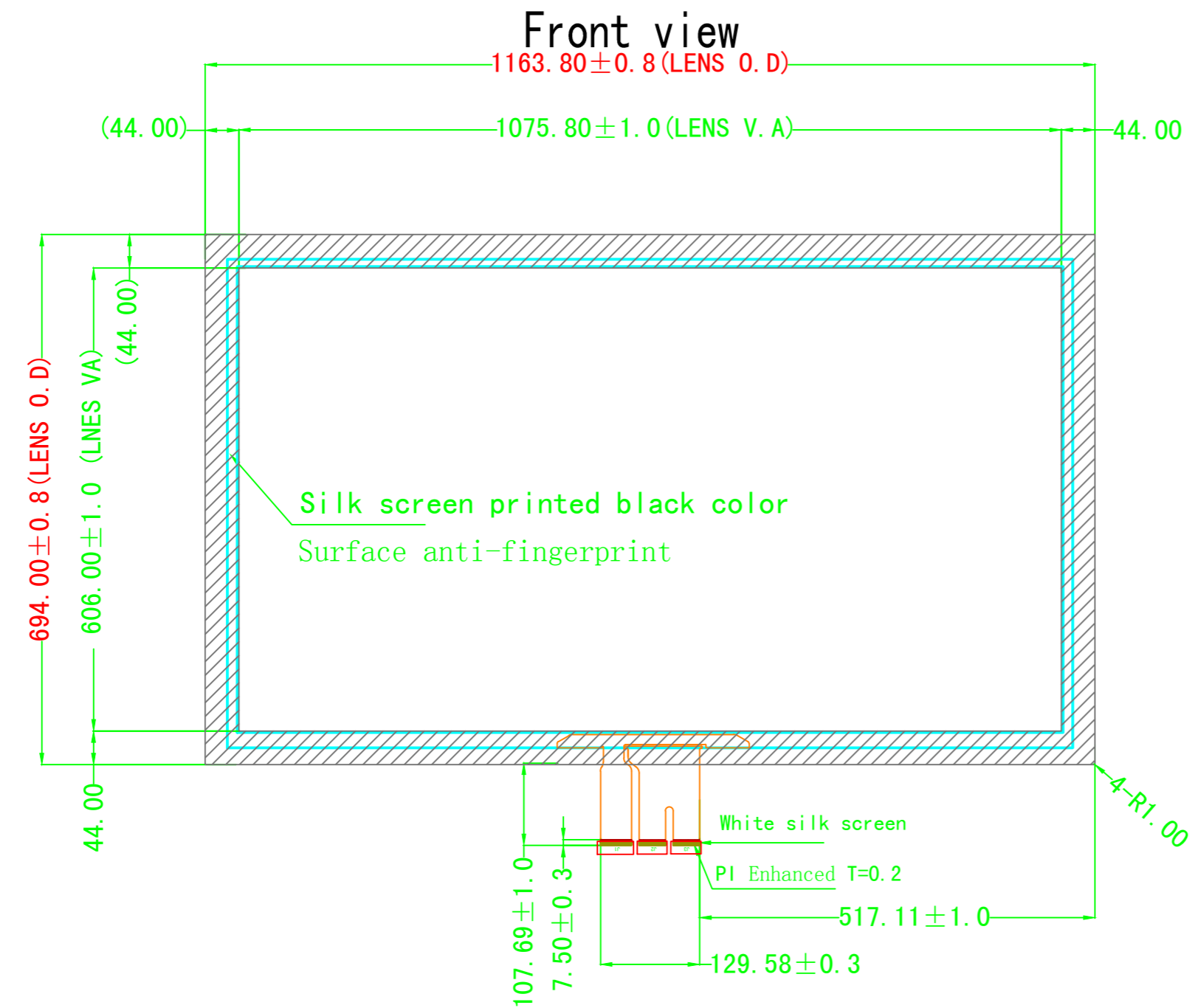
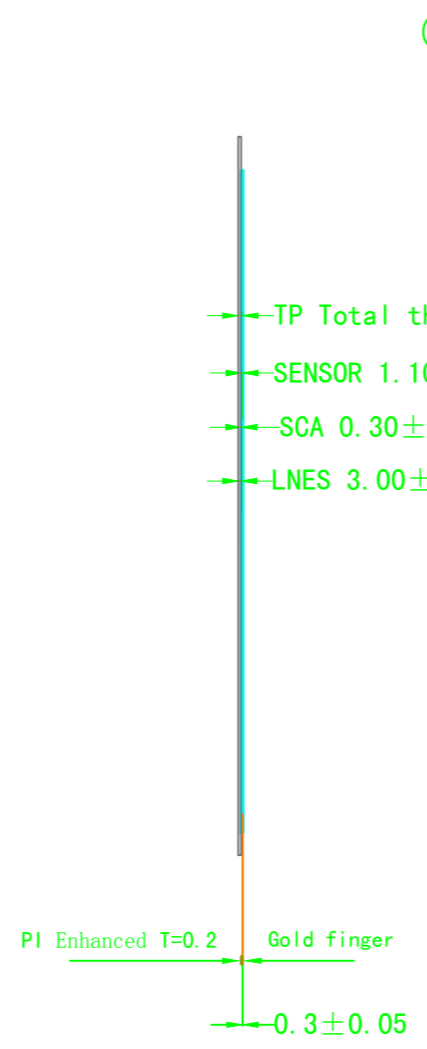


1 2 3 4 5 6 7 8

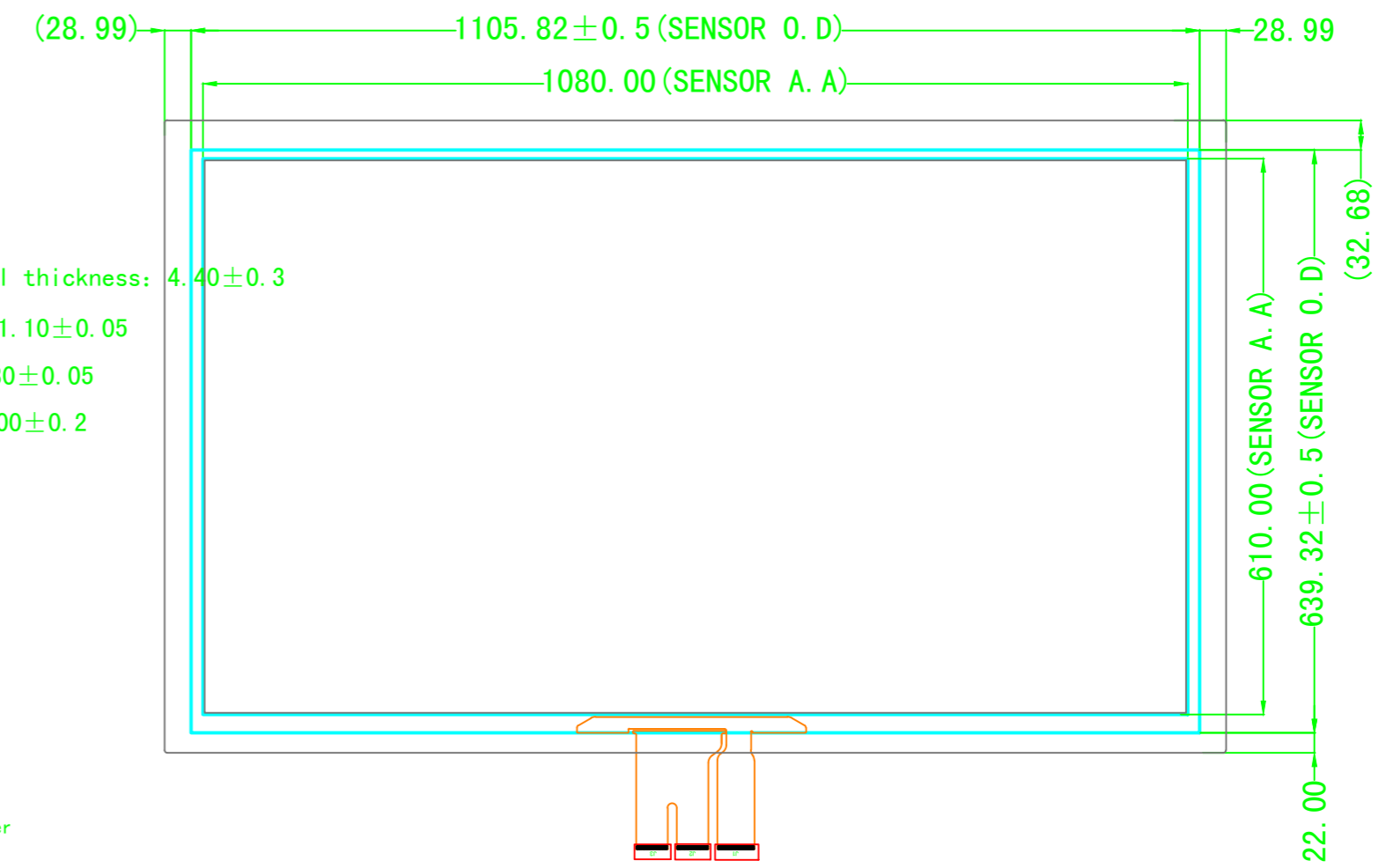
F F



Side view

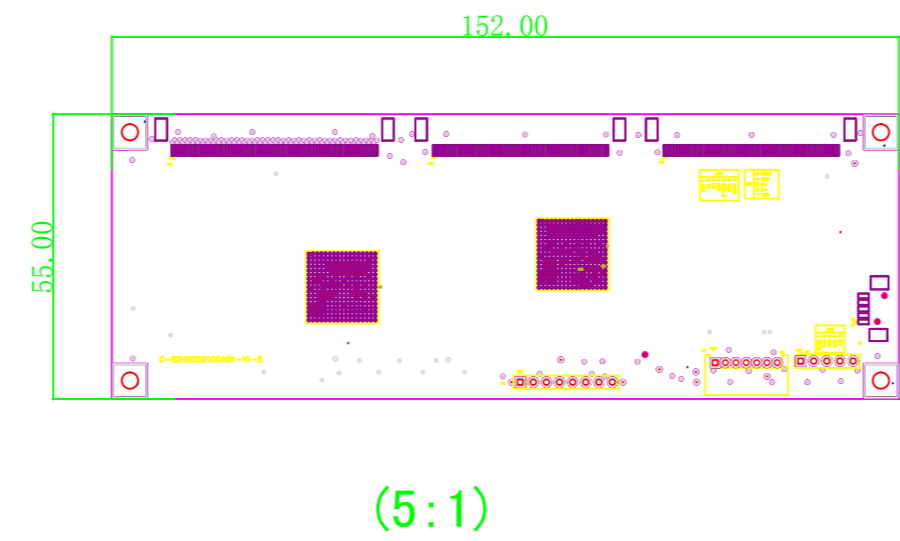


Back view



Technical Spec:

1. COVER LENS : Physical strength tempered glass, + AF;
2. Interface : FPC USB ;
3. IC: EXC80H80+EXC59100;
4. Surface hardness $\geq 7H$;
5. Transmittance $\geq 83\%P$;
6. Common tolerance $\pm 1.0mm$;
7. Follow RoHS standard.



5	GNDE
4	GND
3	D+
2	D-
1	VDD

TP DRAWING		TECHNICA HOUSE INC.			
Sheet	1 of 1	Model NO.		TEC490039A	
UNIT	mm	CUSTOMER P/N		49"	
Rev.	A0	Designed	BRIAN	Date	2018-08-10
Scale	FIT	Checked	JP Lin	Date	2018-08-10
			Approved	Date	

A A

1 2 3 4 5 6 7 8