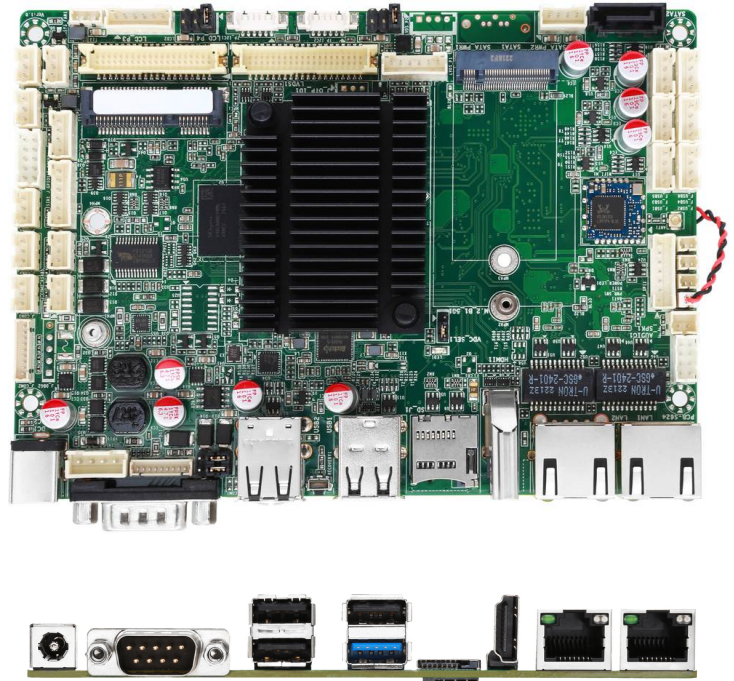
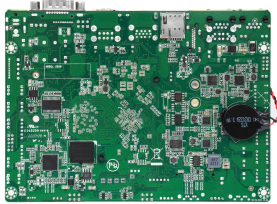


Features

- With Rockchip RK3568 processor
- On board memory 4/8 GB, Storage 32/64G eMMC
- 1 x HDMI, 1 x LVDS/eDP, 1 x LVDS/MIPI, support dual displays
- 10 x USB, 6 x COM, 2 x Gigabit Ethernet, 1 x M.2
- Support WIFI + BT, 1 x Mini-PCle support 3G/4G
- DC 12V Power Input



Core System

| | |
|-----------------------|---|
| CPU | ARM Rockchip RK3568, Quad-Core Cortex-A55, up to 2.0 GHz |
| System Memory | LPDDR4X-3200, 4/8 GB, on board (Default is 4GB on board) |
| Storage | 1 x eMMC 32/64G (Default is 32GB eMMC on board) 2 x SATA 3.0, 1 x TF Card slot |
| Expansion Slot | 1 x Mini-PCle (Wifi/3G/4G) 1 x M.2 (key-B, PCIe 3.0/ PCIe 2.0/ USB 3.0/ SATA, 2242/3052) |
| Power Input | DC 12V |
| Dimensions | 146 x 105 mm, 3.5 inch |
| Operating Temperature | -20°C to +60°C |
| Storage Temperature | -25°C to +70°C |
| Humidity | 10% to 95% relative humidity, non-condensing |

Display

| | |
|----------|---|
| Display | 1 x HDMI: Max resolutions up to 4096 x 2160 @ 60Hz 1 x eDP/LVDS: eDP: Max resolutions up to 2560 x 1600 @ 60Hz LVDS: Max resolutions up to 1920 x 1200 @ 60Hz 1 x LVDS/MIPI: LVDS: Max resolutions up to 1024 x 768 @ 60Hz MIPI: Max resolutions up to 1920 x 1080 @ 60Hz |
| Multiple | Dual displays |

Others

| | |
|------------|---------------------|
| OS Support | Android 11 Linux |
|------------|---------------------|

I/O Interface

| | |
|----------|--|
| Ethernet | 2 x Realtek 1Gbps Ethernet Controller (PHY), RJ45 1 x Wifi+BT (Wifi IEEE 802.11 a/b/g/n/ac, 2.4G/5GHz, BT 4.2) |
| Serial | 4 x RS-232, 2 x RS-232/485 |
| USB | 1 x USB 3.0, 9 x USB 2.0 |
| Audio | Audio Codec with (Line-out + MIC) and Amplifier |
| GPIO | 8 x Programmable GPIO |
| Others | 1 x Recovery Button, 1 x Power Button Header, 1 x System Reset Header 1 x Power LED Header, 1 x SPI Header, 2 x TP I2C Header, 1 x System FAN Header, 2 x Debug Header, 2 x Can Header, 1 x Cash Header, 1 x AT or ATX Select Jumper |