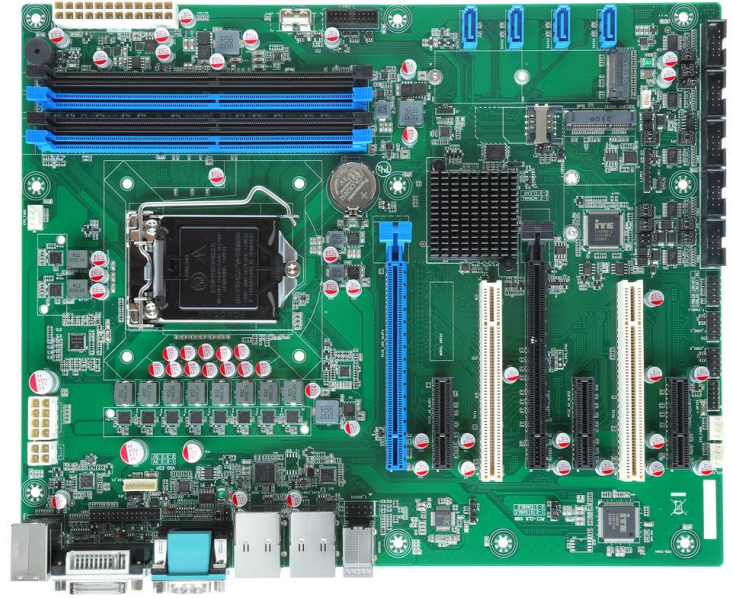
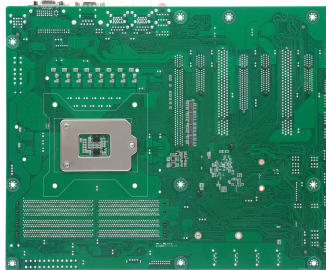


## Features

- Intel 10th/11th LGA1200 processor
- Intel Q470 Chipset
- 4 x DDR4 U-DIMM, up to 128GB
- Support displays for DVI-D, HDMI, VGA, eDP (Header)
- Support PCI-E 16x Slot, PCI-E 16x Slot, PCI-E 4x Slot, 2x PCI Slot
- 4 x SATA 3.0 + 1 x M.2 Key-M Slot (2242/2280)
- 2 x Intel I219/I211 Gigabit Ethernet
- 7 x USB2.0, 6 x USB3.0, 6 x COM, 1 x GPIO
- ATX power input (24P + 8P + 4P)



## Core System

CPU	Intel 10th/11th LGA1200 Socket Processor TDP Max. 125W
System Memory	4 x DDR4 2400/2666/2933MHz U-DIMM, up to 128GB
Chipset	Intel Q470
BIOS	AMI
Storage	Support RST RAID 0, 1, 5, 10 4 x SATA3.0 7P Connector 1 x M.2 Key-M Slot (PCIe x4 NVMe/SATA SSD, 2242/2280)
Watchdog Timer	1 - 255 steps by software program
Expansion Slot	1 x PCI-E 16x Slot (PCIe 16x GEN3) 1 x PCI-E 16x Slot (PCIe 8x GEN3) 3 x PCI-E 4x Slot (PCIe 4x GEN3) 2 x PCI Slot 1 x Mini PCI-E Slot (Wifi+3G/4G, with 1 x Full size SIM card slot) 1 x PCI CLK 66MHz Enable/Disable Select Jumper
Power Input	ATX Standard (24P + 8P +4P) 1 x ATX 4P/8P CPU Power Input Connector 1 x ATX 24P Power Input Connector
Smart Fan Control	CPU Fan / System Fan
Dimensions	305 x 244 mm
Operating Temperature	0°C to +60°C (+32°F to +140°F)
Storage Temperature	-20°C to +70°C (-4°F to +158°F)
Humidity	10% to 95% relative humidity, non-condensing

## Rear I/O

USB	4 x USB 3.0 2 x USB 2.0
Display I/O	1 x DVI (DVI-D) 1 x HDMI (Type-A) 1 x VGA (DB15/F)
Audio I/O	1 x Mic-in / 1 x Line-out / 1 x Line-in
LAN I/O	2 x RJ-45, Intel Giga LAN
Serial Port	1 x RS-232
PS/2 Port	1 x PS/2
Others	-

## Internal Connectors

USB	2 x USB 3.0 5 x USB 2.0
Display I/O	1 x eDP header
Audio I/O	-
Serial Port	3 x RS-232, 1 x RS-232/485, 1 x RS-232/422/485 header
Parallel Port	-
GPIO	1 x GPIO Header (Programmable support 8-bit GPIO)
FAN	1 x 4-pin CPU Fan Header / 2 x 4-pin System Fan Header
Power	1 x ATX 4P CPU / 1 x ATX 8P CPU / 1 x ATX 24P Power input connector
Others	1 x Front Panel Header, 1 x Port80 Debug Header, 1 x SMBUS Header, 1 x Case Open Header, 1 x AT/ATX Select Jumper 1 x COMS Clear Jumper, 1 x ME Flash Jumper, 1 x Data Burning Header

## Graphics

Chipset	Intel HD Graphics
VGA	Up to 1920 x 1200 @ 60Hz
DVI	Up to 1920 x 1200 @ 60Hz
HDMI	Up to 4096 x 2160 @ 30Hz
Display Port	-
LVDS	-
eDP (Header)	Up to 4096 x 2304 @ 60Hz

## Others

OS Support	Windows 10 64-bit, Linux
Certifications	CE / FCC Class B